

COLLABORATIVE TREATMENT OF A PASTEL PAINTING



COLLABORATIVE PROJECT

Advisors: Cyntia Karnes (Head of Paper Conservation), Allison Brewer (Associate Paper Conservator), Elise Effmann Clifford (Paintings), Natasa Morovic (Frames)



Measuring frame with Natasa Morovic and Josephine Jenks. Image by Allison Brewer



Mother and Child, Francis Cotes, 1751, pastel on paper mounted to stretched canvas, 27 3/16 x 22 1/16 x 1/2 inches

THE TWO JOSEPHINES OF CONSERVATION



Image by Isaac Messina



Image by Tricia O'Regan

Josephine Jenks, NYU Class of 2024
FAMSF Graduate Intern in Conservation of Paper and Time-Based Media

PASTEL PAINTING: DETACHED MARGINS



Before treatment, left edge



Before treatment, left edge, detail

HINGE MOCKUPS

Desired Properties:

- No pressure or contact with powdery pastel media
- No moisture or solvents
- Neutral pH
- Reversible
- Flexible

Combinations of the following were tested:

Hinge Substrate	Adhesive
- Kozo tissue paper	- BEVA 371 film
- Hollytex	- Lascaux 498HV
- Reemay	- Wheat starch paste
- Japanese tissue (unknown scrap)	- Jade 403

Final combination: Kozo tissue + BEVA film



Testing combinations of hinge substrates + adhesives and application methods on a study painting

STRUCTURAL STABILIZATION



Preparing hinges



Adhering hinges

STRUCTURAL STABILIZATION



Image by Allison Brewer

Applying hinges



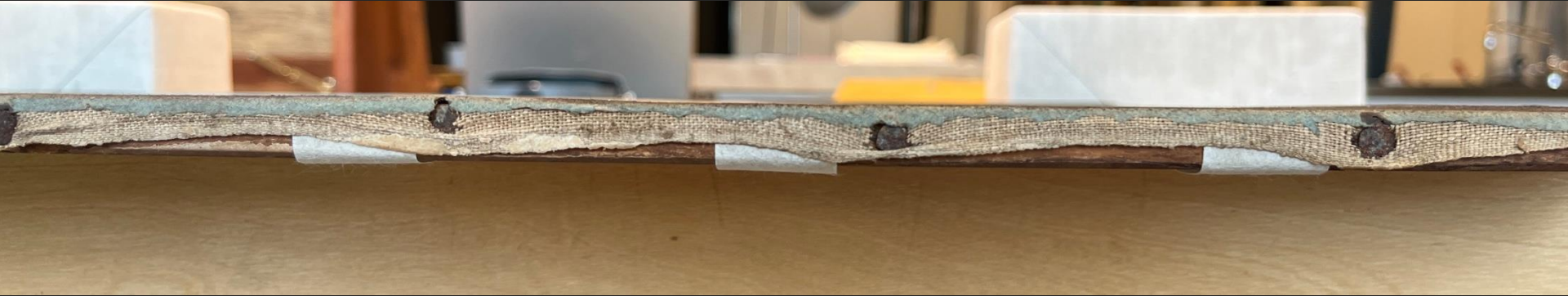
Adhered "T"-hinges

“T”-SHAPED HINGES



Yellow boxes indicate where adhesive is applied. If the hinge needs to be re-adjusted in the future, it can be cut along the **red dotted lines** to maintain its length.

STRUCTURAL STABILIZATION



Detail of edge after treatment